

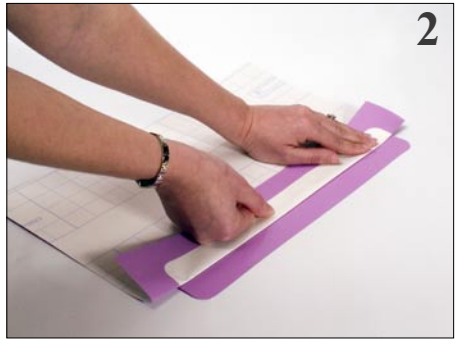
How to apply your Lapjack™

1



- Close the lid of your laptop.
- Clean well to ensure the lid of the laptop is clean, dry and dust free.

2



- Place Lapjack upside down on the table.
- Peel the backing off from the first 2 cms and fold over.

3



- Apply the front edge of the Lapjack to the lid of the laptop nearest the hinge.

4



- Slowly pull away the backing at the same time as smoothing down the Lapjack to avoid bubbles forming.

Notes:

- Take care to prevent the Lapjack from sticking to itself.
- If any bubbles appear just pull up the edge nearest and smooth them away.

TOSHIBA

LapJacks™

For more information
and further Lapjack designs
call us on:

0870 7873762

Open 9:00am-6:00pm Monday to Friday

How to remove your Lapjack™



- Close the lid of your laptop.
- Peel up a corner and steadily pull the Lapjack parallel to the laptop lid.



- Do not pull directly away from the lid.
- Do not tug or jerk the Lapjack.

Lapjack Notes

- Lapjacks are designed to give a new look to your laptop and to protect it.
- Slight creasing of the backing is normal when you take it out of the packaging. This will disappear as you smooth out your Lapjack.
- Your lapjack can be peeled off and reused.
- Once removed, the lapjack can be stored on the original backing or any shiny surface.
- Lapjacks will leave no residue once removed.

